

iThrive

A COWORKING COMMUNITY



40 Lloyd Ave, Suite 203, Malvern, PA 19355

Membership Amenities



Fully
Furnished



Flexible Office Time
or Private Office



24 / 7
Access



Meeting Room
Credits



Free
Parking



Free Coffee
Beverages & Snacks



Color &
B/W Printing



Enterprise Level
WiFi



Community
Events

Brokers

Get Paid
for referrals!

Brokers need not attend site inspections, but we are happy to have you attend.

New Memberships are paid at the greater of 10% of the first 12 month of membership fees or 5% of the total contract value for membership fees and we continue to pay on Expansions and Renewals. See our Broker Compensation Policy for full terms.



Flexible Memberships with Hybrid, Team and Hoteling Plans

Turnkey Private Office and Configurable Workplace Options for 1 -

Open Space Coworking, Shared Office Time, Meeting and Event Spaces
and Virtual Addresses available separately or as add-on to Team Plans

Work out of Multiple Locations

We offer flexible memberships to our uncommon workspaces– so YOU can choose when, where, and how you work. No hidden fees or extra charges, one membership includes enterprise level wifi, black and white printing, coffee, networking opportunities, and the ability to work out of any iThrive location.

Our members:

- Cut unnecessary business costs
- Maximize productivity
- Improve their work-life balance
- Make meaningful connections

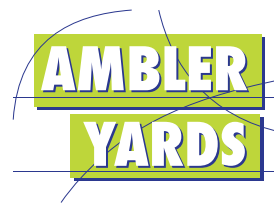
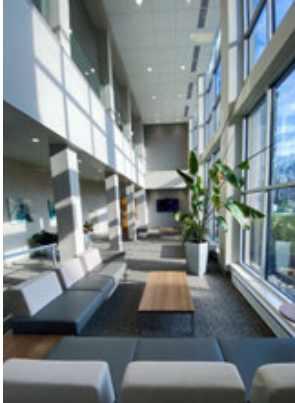
Our member agreements are both short term and flexible, with terms that suit your needs. Cancel anytime or upgrade as your company scales.

MALVERN LOCATION AMENITIES

Get to work instantly at our turn-key offices located just outside of Malvern Borough, within the newly renovated building at 40 Lloyd Ave. Nestled beside Greentree Park, this location offers ease of access, ample parking, and serene views. Find dining, shopping and more in quaint Downtown Malvern.

Reserve a sun filled office or meeting space easily with the iThrive app or choose your dedicated space.

- Meeting Space for 1 - 10
- Conference Room for 8 and Phone Room
- Rentable or Dedicated Offices



[Learn Out More About Ambler Yards](#)

Flexible Office / Hoteling starting at just \$199/month
Dedicated Private Space starting at just \$699/month
Custom Plans Available for Teams
Add-on Coworking Memberships for additional staff

MEMBERSHIP INCLUDES

OFFICE NEEDS

- » Turn-key Space
- » Fast and Secure Wi-Fi Network
- » Enterprise Grade Security
- » Complimentary Office Supplies
- » B&W/color networked printing, scanning and copying
- » Convenient Equipment Lockers For Rent
- » Business Address

FOOD & DRINK

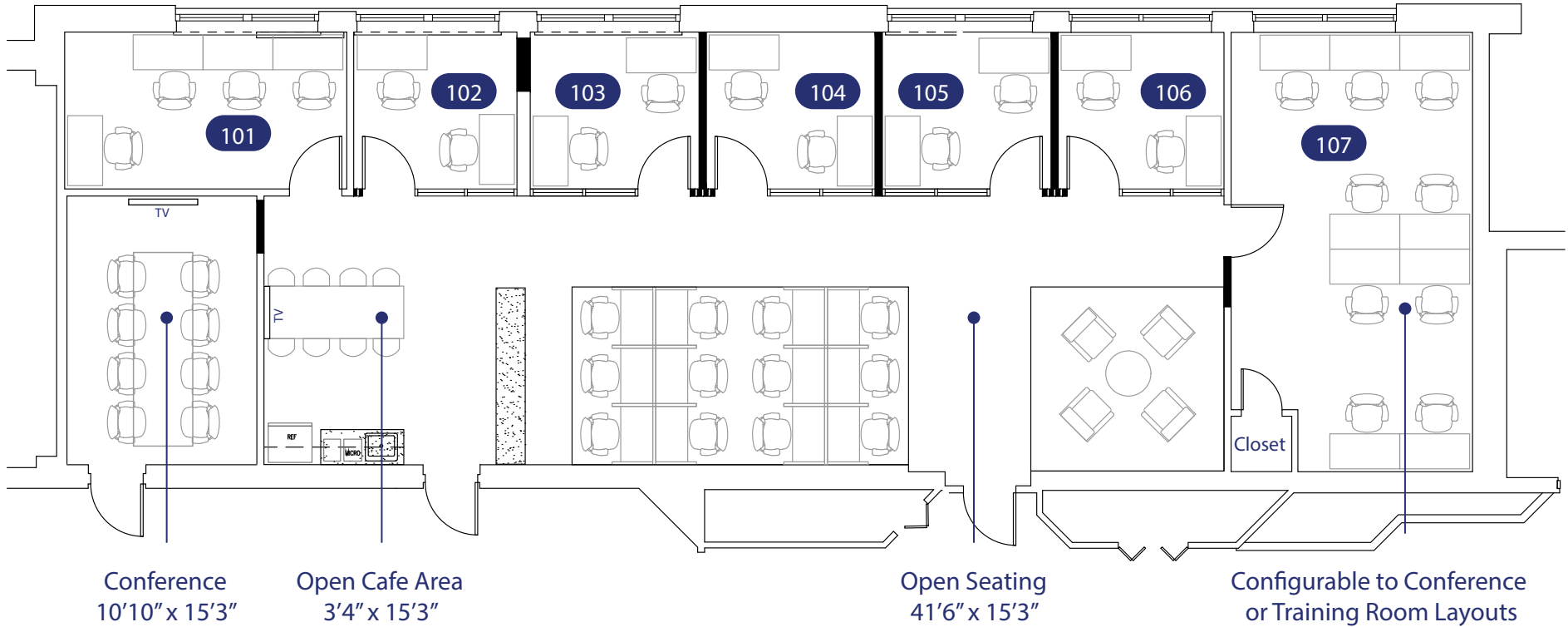
- » Complimentary coffee and beverage station
- » Complimentary seasonal beer on tap
- » Purified water
- » Kitchen with snacks and shared refrigerator
- » Close proximity to food establishments Downtown Malvern

CONFERENCE & MEETING SPAC

- » Rentable Office Space and Phone Room
- » Conference Rooms with TV

COMMUNITY & GUEST PASSES

- » Access to programming including the monthly Community Lunch, office hours with serial entrepreneurs, various member opportunities to grow and feature their brand
- » Allotted Guest Passes per Membership



101	16'1" x 9'	1 - 4 people	104	9'8" x 9'	1 - 2 people	107	13'10" x 25'	1 - 10 people
102	9'4" x 9'	1 - 2 people	105	9'8" x 9'	1 - 2 people			
103	9'8" x 9'	1 - 2 people	106	9'6" x 9'	1 - 2 people			

